

# VMECA VACUUM CARTRIDGE

## VC302

### Features and Strengths

- Two stage – VMECA midi cartridge
- High vacuum level (-92 kPa) at low air pressure
- Efficient air consumption with high vacuum level and vacuum flow
- International patent
- Reliable performance despite inconsistent compressed air pressure



### Specifications

Description	VC302
Max. Vacuum level	-92 kPa
Open Vacuum flow	171 NI/min
Max. Feed pressure	7 bar
Temperature	-20 ~ 80 °C
Material	PPS, POM, NBR, AL(Holding plug)
Weight	12.29 g

### Vacuum Flow

Model	Max. vacuum (-kPa)	Feed Pressure (bar)	Vacuum flow (NI/min) at different vacuum levels (-kPa)									
			0	10	20	30	40	50	60	70	80	90
VC302	55	1.7	158	104	71	41.5	22.5	7.35	-	-	-	-
	75	2.2	164	122.5	88	53	31.4	28.5	16.5	4.6	-	-
	92	3	170	152	106	64	33	32	22	16.5	6.4	1.9
	92	4	171	154	127.5	94	69	43	23.3	17.3	6.9	2.1

### Evacuation Time

Model	Feed Pressure (bar)	Air Consumption (NI/min)	Evacuation time in sec / liter to reach different vacuum levels (-kPa)									
			10	20	30	40	50	60	70	80	90	
VC302	1.7	82	0.025	0.15	0.25	0.47	0.8	-	-	-	-	
	2.2	97	0.03	0.12	0.21	0.38	0.47	0.73	1.62	-	-	
	3	118	0.027	0.1	0.19	0.3	0.4	0.64	0.8	1.2	3.8	
	4	152	0.026	0.058	0.09	0.1	0.25	0.5	0.69	1.05	3.5	

## Build an Ordering No.

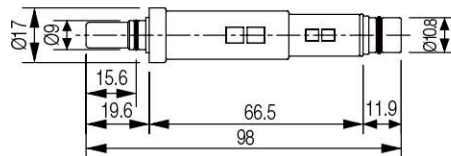
1. Cartridge	Description	Ordering No.
	Midi vacuum cartridge, 2-stage	VC302
	Midi vacuum cartridge, 2-stage, Non-return valve	VC302-N
	Midi vacuum cartridge, 2-stage, Holding plug	VC302P
	Midi vacuum cartridge, 2-stage, Holding plug, Non-return valve	VC302P-N

## Spare Parts – Plug

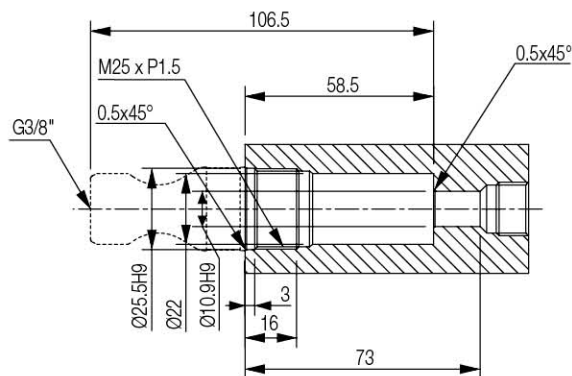
Model	Description	Weight (g)
VCP-M25-302	Holding plug	31.04

## Dimension - Basic Pump

[ Unit : mm ]



VC302P



VC302P

# VMECA VACUUM CARTRIDGE

## VCL302

### Features and Strengths

- Two stage – VMECA midi cartridge
- Large vacuum flow in efficient air consumption
- International patent
- Reliable performance despite inconsistent compressed air pressure



### Specifications

Description	VCL302
Max. Vacuum level	-75 kPa
Open Vacuum flow	200 NI/min
Max. Feed pressure	7 bar
Temperature	-20 ~ 80 °C
Material	PPS, POM, NBR, AL(Holding plug)
Weight	12.14 g

### Vacuum Flow

Model	Max. vacuum (-kPa)	Feed Pressure (bar)	Vacuum flow (NI/min) at different vacuum levels (-kPa)									
			0	10	20	30	40	50	60	70	80	90
VCL302	60	4	188	158	110	70	46	28	6.8	-	-	-
	70	5	195	176	130	82	50	37.5	23	11.3	-	-
	75	6	200	183	154	100	52	38	32	22	-	-

### Evacuation Time

Model	Feed Pressure (bar)	Air Consumption (NI/min)	Evacuation time in sec / liter to reach different vacuum levels (-kPa)									
			10	20	30	40	50	60	70	80	90	
VCL302	4	70	0.035	0.084	0.17	0.29	0.38	0.8	-	-	-	
	5	85	0.027	0.08	0.15	0.25	0.3	0.4	0.8	-	-	
	6	104	0.028	0.08	0.12	0.2	0.28	0.36	0.6	-	-	

## Build an Ordering No.

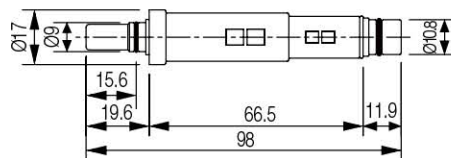
1. Cartridge	Description	Ordering No.
	Midi vacuum "L" cartridge, 3-stage	VCL302
	Midi vacuum "L" cartridge, 3-stage, Non-return valve	VCL302-N
	Midi vacuum "L" cartridge, 3-stage, Holding plug	VCL302P
	Midi vacuum "L" cartridge, 3-stage, Holding plug, Non-return valve	VCL302P-N

## Spare Parts – Plug

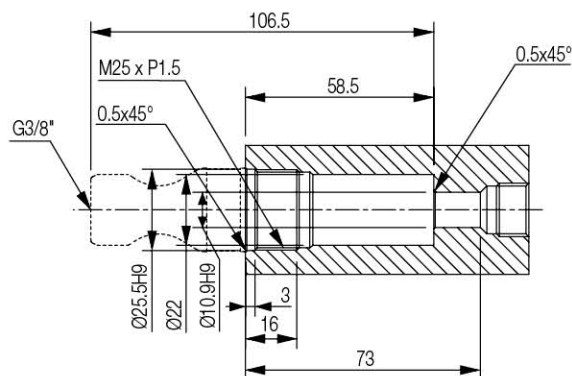
Model	Description	Weight (g)
VCP-M25-302	Holding plug	31.04

## Dimension - Basic Pump

[ Unit : mm ]



VCL302P



VCL302P

# VMECA VACUUM CARTRIDGE

## VC303

### Features and Strengths

- Three stage – VMECA midi cartridge
- High vacuum level (-92 kPa) at low air pressure
- Efficient air consumption with high vacuum level and vacuum flow
- International patent
- Reliable performance despite inconsistent compressed air pressure



### Specifications

Description	VC303
Max. Vacuum level	-92 kPa
Open Vacuum flow	341 NI/min
Max. Feed pressure	7 bar
Temperature	-20 ~ 80 °C
Material	PPS, POM, NBR, AL(Holding plug)
Weight	24.63 g

### Vacuum Flow

Model	Max. vacuum (-kPa)	Feed Pressure (bar)	Vacuum flow (NI/min) at different vacuum levels (-kPa)									
			0	10	20	30	40	50	60	70	80	90
VC303	55	1.7	243	104	71	41.5	22.5	7.35	-	-	-	-
	75	2.2	302	122.5	88	53	31.4	28.5	16.5	4.6	-	-
	92	3	338	152	106	64	33	32	22	16.5	6.4	1.9
	92	4	341	154	127.5	94	69	43	23.3	17.3	6.9	2.1

### Evacuation Time

Model	Feed Pressure (bar)	Air Consumption (NI/min)	Evacuation time in sec / liter to reach different vacuum levels (-kPa)									
			10	20	30	40	50	60	70	80	90	
VC303	1.7	82	0.021	0.15	0.25	0.47	0.8	-	-	-	-	
	2.2	97	0.019	0.09	0.1	0.32	0.42	0.73	1.62	-	-	
	3	118	0.015	0.07	0.18	0.28	0.38	0.64	0.8	1.2	3.8	
	4	152	0.01	0.048	0.07	0.09	0.2	0.42	0.6	1	3.4	

## Build an Ordering No.

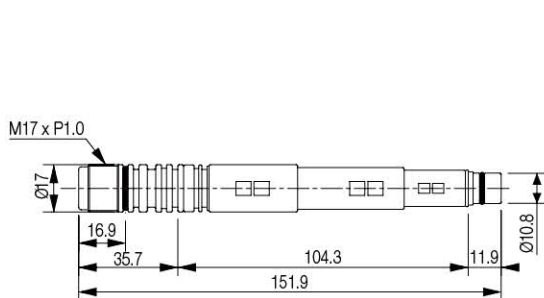
1. Cartridge	Description	Ordering No.
	Midi vacuum cartridge, 3-stage	VC303
	Midi vacuum cartridge, 3-stage, Non-return valve	VC303-N
	Midi vacuum cartridge, 3-stage, Holding plug	VC303P
	Midi vacuum cartridge, 3-stage, Holding plug, Non-return valve	VC303P-N
	Midi vacuum cartridge, 3-stage, M25 Two-fold silencer	VC303S
	Midi vacuum cartridge, 3-stage, M25 Two-fold silencer, Non-return valve	VC303S-N

## Spare Parts – Plug

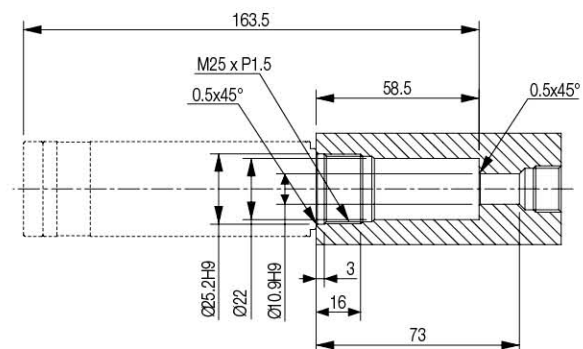
Model	Description	Weight (g)
VCP-M25-303	Holding plug	59.32
VTTs-M25	M25 Two-fold silencer	78.34

## Dimension - Basic Pump

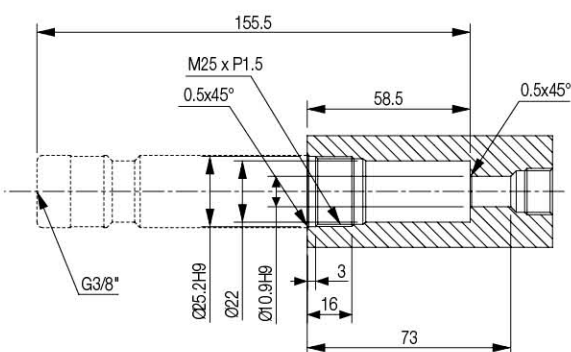
[ Unit : mm ]



VC303



VC303S



VC303P

# VMECA VACUUM CARTRIDGE

## VCL303

### Features and Strengths

- Three stage – VMECA midi cartridge
- Large vacuum flow in efficient air consumption
- International patent
- Reliable performance despite inconsistent compressed air pressure



### Specifications

Description	VCL303
Max. Vacuum level	-75 kPa
Open Vacuum flow	362 NI/min
Max. Feed pressure	7 bar
Temperature	-20 ~ 80 °C
Material	PPS, POM, NBR, AL(Holding plug)
Weight	24.12 g

### Vacuum Flow

Model	Max. vacuum (-kPa)	Feed Pressure (bar)	Vacuum flow (NI/min) at different vacuum levels (-kPa)									
			0	10	20	30	40	50	60	70	80	90
VCL303	60	4	302	176	110	70	46	28	6.8	-	-	-
	70	5	344	200	130	82	50	37.5	23	11.9	-	-
	75	6	362	215	154	100	52	38	32	22	-	-

### Evacuation Time

Model	Feed Pressure (bar)	Air Consumption (NI/min)	Evacuation time in sec / liter to reach different vacuum levels (-kPa)									
			10	20	30	40	50	60	70	80	90	
VCL303	4	70	0.028	0.09	0.17	0.29	0.38	0.8	-	-	-	
	5	85	0.013	0.08	0.15	0.25	0.3	0.4	0.8	-	-	
	6	104	0.012	0.07	0.12	0.2	0.28	0.36	0.6	-	-	

## Build an Ordering No.

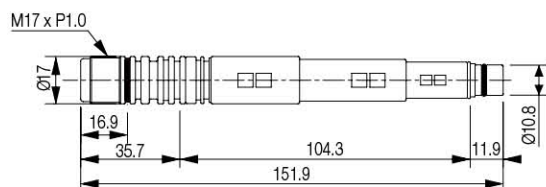
1. Cartridge	Description	Ordering No.
	Midi vacuum "L" cartridge, 3-stage	VCL303
	Midi vacuum "L" cartridge, 3-stage, Non-return valve	VCL303-N
	Midi vacuum "L" cartridge, 3-stage, Holding plug	VCL303P
	Midi vacuum "L" cartridge, 3-stage, Holding plug, Non-return valve	VCL303P-N
	Midi vacuum "L" cartridge, 3-stage, M25 Two-fold silencer	VCL303S
	Midi vacuum "L" cartridge, 3-stage, M25 Two-fold silencer, Non-return valve	VCL303S-N

## Spare Parts – Plug

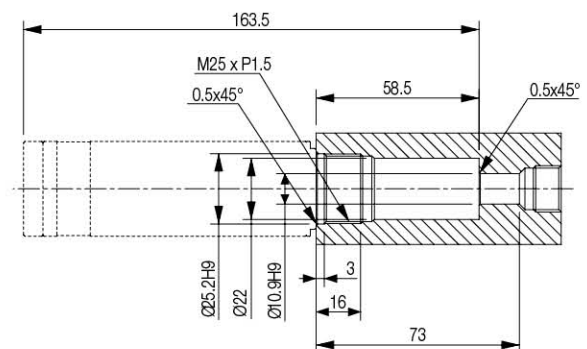
Model	Description	Weight (g)
VCP-M25-303	Holding plug	59.32
VTTs-M25	M25 Two-fold silencer	78.34

## Dimension - Basic Pump

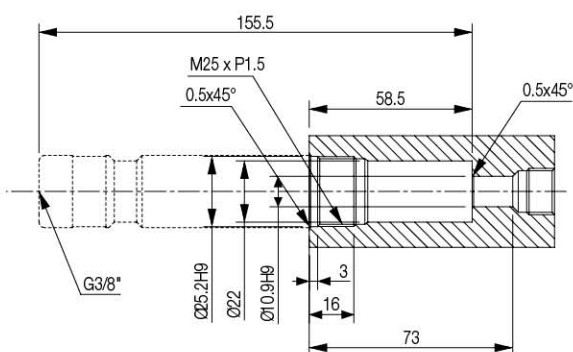
[ Unit : mm ]



VCL303



VCL303S



VCL303P



# VMECA VACUUM CARTRIDGE

## VCX303

### Features and Strengths

- Three stage – VMECA midi cartridge
- Deep end vacuum level upto -95kpa
- Available for customized plug
- International patent - Reliable performance despite inconsistent compressed air pressure
- Quick response time when deep vacuum is needed



### Specifications

Description	VCX303
Max. Vacuum level	-95 kPa
Open Vacuum flow	310 NI/min
Max. Feed pressure	6 bar
Temperature	-20 ~ 80 °C
Material	PPS,POM,NBR,AL(Holding plug)
Weight	24.12 g

### Vacuum Flow

Model	Max. vacuum (-kPa)	Feed Pressure (bar)	Vacuum flow (NI/min) at different vacuum levels (-kPa)									
			0	10	20	30	40	50	60	70	80	90
VCX303	95	4.5	266	192	130	82	52	43	31	20	12	1
	94.8	5	282	203	133	116	70	42	30	20	12	1
	94.5	6	310	223	132	122	101	60	27	19	9	1

### Evacuation Time

Model	Feed Pressure (bar)	Air Consumption (NI/min)	Evacuation time in sec / liter to reach different vacuum levels (-kPa)									
			10	20	30	40	50	60	70	80	90	
VCX303	4.5	124	0.013	0.071	0.144	0.25	0.33	0.61	0.8	1.3	3.1	
	5	126	0.013	0.07	0.129	0.23	0.3	0.57	0.75	1.2	3.1	
	6	140	0.011	0.058	0.1	0.18	0.24	0.48	0.62	1.1	3	

## Build an Ordering No.

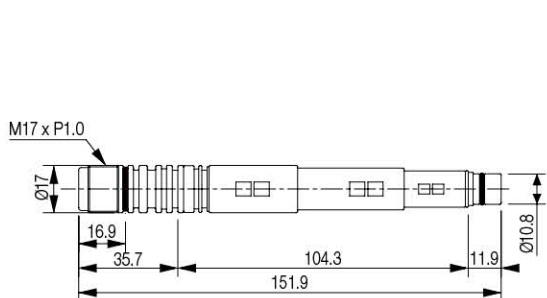
1. Cartridge	Description	Ordering No.
	Midi vacuum "X" cartridge, 3-stage	VCX303
	Midi vacuum "X" cartridge, 3-stage , Non-return valve	VCX303-N
	Midi vacuum "X" cartridge, 3-stage, Holding plug	VCX303P
	Midi vacuum "X" cartridge, 3-stage, Holding plug, Non-return valve	VCX303P-N
	Midi vacuum "X" cartridge, 3-stage, M25 Two-fold silencer	VCX303S
	Midi vacuum "X" cartridge, 3-stage, M25 Two-fold silencer, Non-return valve	VCX303S-N

## Spare Parts – Plug

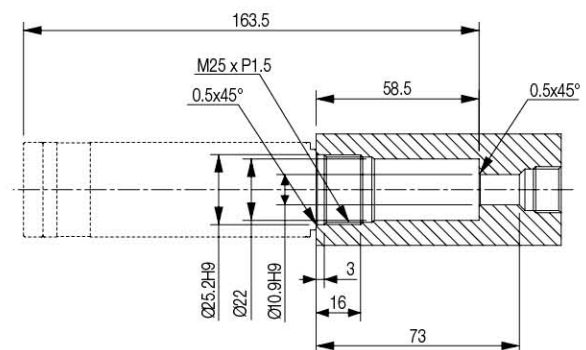
Model	Description	Weight (g)
VC-M25-303	Holding plug	59.32
VTTs-M25	M25 Two-fold silencer	78.34

## Dimension - Basic Pump

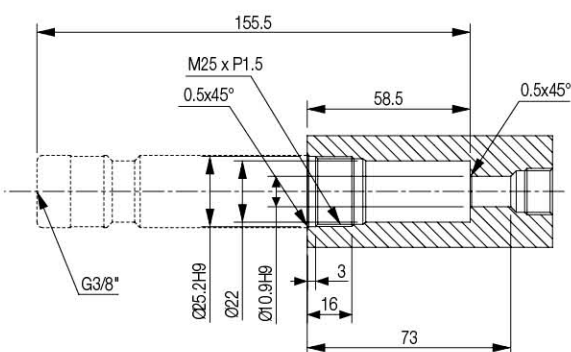
[ Unit : mm ]



VCX303



VCX303S



VCX303P